



PRODUCT DATA SHEET

Product:	Natural Lemonade Type FL SD
Product Code:	11025
Issue Date:	3/19/2024

PHYSICAL DATA:	
Quality Attribute	Specification: Target (Range)
Appearance	White to Pale Yellow Powder
Aroma	Characteristic of Lemonade
Taste	Characteristic of Lemonade
Expected Shelf Life	9 Months
Recommended Storage Conditions	Store in original unopened containers at 50 - 80F (10 - 27C) away from direct sunlight or heat.
Declarations	Vegan, Vegetarian, Natural, Kosher Certified, GMO Free (PCR Negative),
Allergens	None
Ingredient Declaration	Maltodextrin, Gum Arabic, and Natural Flavors
Label Declaration	All flavor ingredients in the product are approved for use in a regulation of the Food and Drug Administration or are generally recognized as safe from reliably published association lists
Pack-Off	Product packaged at 50 pound increments in a food grad polyethylene lined corrugate box.

Analytical/Microbiological Specifications:		
Analysis	Specification	Method
Coliforms	<=100 cfu/g	AOAC 991.14
Salmonella	Negative /25g	USP <2022>
Yeast & Mold	<=100 cfu/g	AOAC 997.02
Loss on Drying	<8.0%	USP <731>
Particle Size Distribution	≥99.0% thru 20 mesh	Internal Procedure
Organoleptic	Conforms to Standard	Internal Procedure



ALLERGEN STATEMENT

Product:	Natural Lemonade Type FL SD
Product Code:	200-128A
Issue Date:	3/19/2024

Allergen	Present	Same Line
Soy	No	No
Tree Nuts <i>almond, brazil nuts, nutmeg, cashews, coconut</i>	No	No
Egg <i>eggs, albumin</i>	No	No
Fish <i>fish, anchovy, bass, cod, salmon, etc.</i>	No	No
Wheat <i>flour, gluten flour, starches, bran</i>	No	No
Milk <i>milk, casein, lactose, whey, etc.</i>	No	No
Sesame Seeds <i>oil, seed</i>	No	No
Peanuts <i>peanut oil, peanut flour, mandelona nuts</i>	No	No
Crustaceans <i>shrimp, crab, crayfish, lobster, prawn</i>	No	No
Other Sensitivities	Present	Same Line
Lupin	No	No
Carmine	No	No
Refined Oils	No	No
Glutamate/Glutamic Acid	No	No
Mustard <i>oil, seed</i>	No	No
Sulfites >10ppm <i>sulfur dioxide, sodium dithionite</i>	No	No
Yellow #5 <i>tartazine</i>	No	No
Gluten <i>wheat, barley, oats, flour</i>	No	No



NUTRITIONAL STATEMENT

Product:	Natural Lemonade Type FL SD
Product Code:	200-128A
Issue Date:	3/19/2024

	Per 100 grams (by calculation)
Calories, k/Cal	349
Calcium, mg/100g	62.0
Carbohydrates, g/100g	90.0
Cholesterol, mg/100g	0.0
Saturated Fat, g/100g	0.0
Total Fat, g/100g	0.0
Total Trans Fat, g/100g	0.0
Dietary Fiber, g/100g	0.0
Iron, mg/100g	0.0
Potassium, mg/100g	8.9
Protein, g/100g	0.2
Sodium, mg/100g	101.6
Sugars, g/100g	3.5
Added Sugars, g/100g	0.0
Vitamin D, mcg/100g	0.0
Ash, g/100g	0.0



GMO STATEMENT

Product:	Natural Lemonade Type FL SD
Product Code:	200-128A
Issue Date:	3/19/2024

GMO Status

<p>Non-GMO Does not contain components from GMO sources.</p>	
<p>Non-GMO: Identity-Preserved Comprises of ingredients that were produced or derived from canola, corn, cotton, potato, and/or tomato; however these ingredients can be certified non-GMO. Compliant with European GM traceability standards EC 1829/2003 and 1830/2003.</p>	
<p>GMO Free (PCR Negative) Contains components that were produced or derived from canola, corn, cotton, potato, and/or tomato; however these components do not contain DNA/protein. This is validated by analytical testing or based on scientific principles.</p>	✓
<p>Contains or Derived from GMO sources Contains components that were produced or derived from a GMO source.</p>	



DIETARY RESTRICTIONS

Product:	Natural Lemonade Type FL SD
Product Code:	200-128A
Issue Date:	3/19/2024

Sensapure, Inc. declares that the above mentioned product, to the best of our knowledge, does not contain animal-derived ingredients including dairy, honey, and egg products. This product is suitable for vegetarians and vegans. In that this product does not contain ingredients of animal origin, Sensapure also declares the product is hormone free.



L

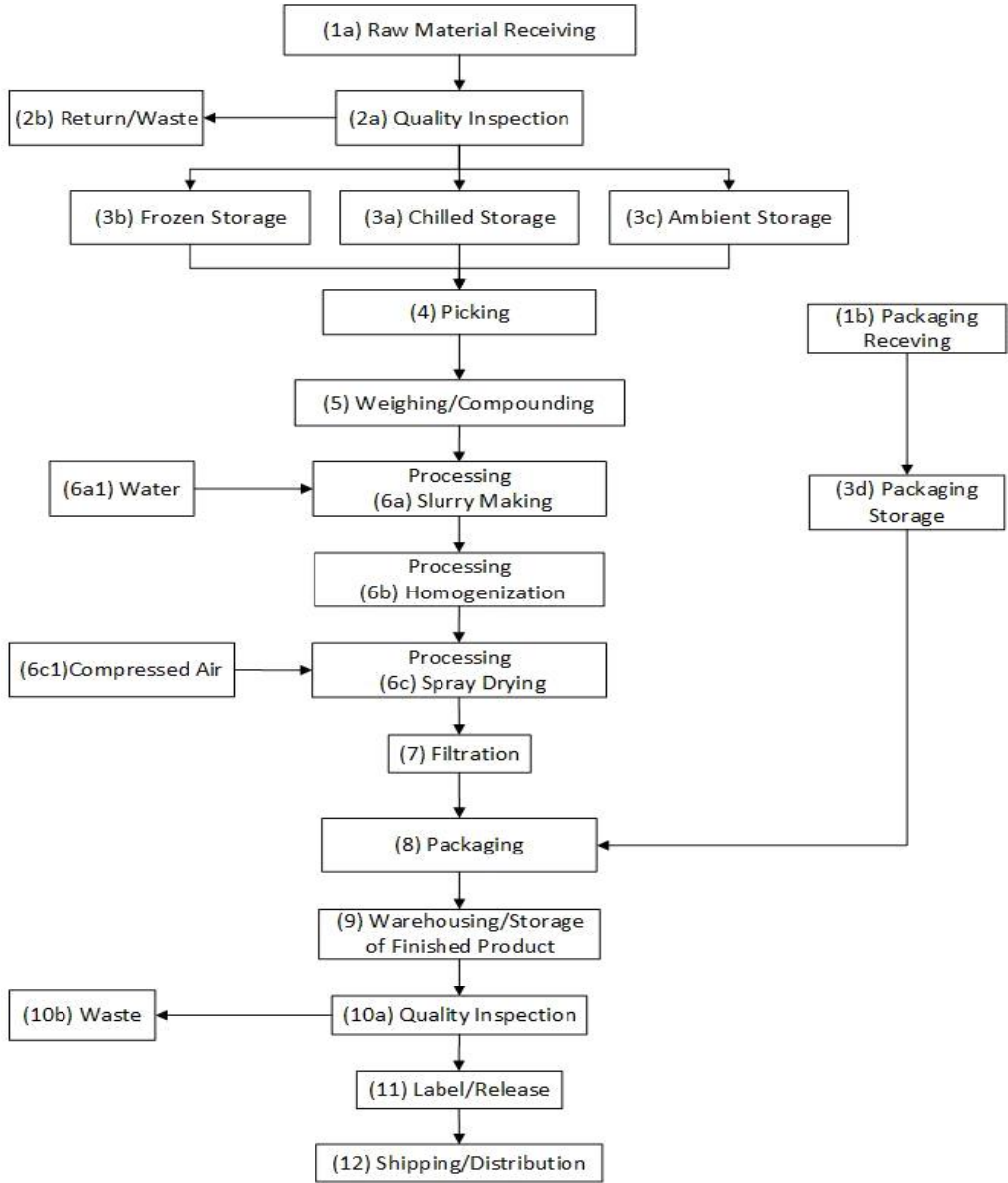
COUNTRY OF ORIGIN

Product:	Natural Lemonade Type FL SD
Product Code:	200-128A
Issue Date:	3/19/2024

Sensapure, Inc. certifies that the above mentioned product is manufactured in the United States of America (USA).

Spray Dry Flow Chart

Product: Natural Lemonade Type FL SD
 Product Code: 200-128A
 Issue Date: 3/19/2024





GLUTEN STATEMENT

Product:	Natural Lemonade Type FL SD
Product Code:	200-128A
Issue Date:	3/19/2024

Sensapure, Inc. declares that the above mentioned product, to the best of our knowledge, does not contain gluten.



CERTIFICATE OF ANALYSIS

Customer:
Product Description: Natural Lemonade Type FL SD
Product Code: 200-128A
Customer Item Code:

Lot Number:
Date of Manufacture:
Expiration Date:

Assay	Specification	Result
Organoleptic		
Appearance	White to Pale Yellow Powder	
Aroma	Characteristic of Lemonade	
Taste	Characteristic of Lemonade	
Analytical Testing		
Particle Size	≥99.0% thru 20 mesh	
Loss on Drying	<8.0%	

DISCLOSURE: This document is an example Certificate of Analysis and does not represent a manufactured batch of material. Microbiological testing is performed on a rotational basis and is available upon request.

Approved By: _____

*Testing information included on actual certificates of Analysis may vary depending on internal testing frequencies and customer requirements.
 Sensapure, Inc. | 1945 S. Fremont Drive, Salt Lake City, UT 84104 | 801-456-4284 | info@sensapure.com