



PRODUCT DATA SHEET

| | |
|---------------|--|
| Product: | Natural Mixed Berry FL WONF SD Non-GMO |
| Product Code: | 10838 |
| Issue Date: | 3/19/2024 |

| PHYSICAL DATA: | |
|--------------------------------|--|
| Quality Attribute | Specification: Target (Range) |
| Appearance | White to Off White Powder |
| Aroma | Characteristic of Mixed Berry |
| Taste | Characteristic of Mixed Berry |
| Expected Shelf Life | 12 Months |
| Recommended Storage Conditions | Store in original unopened containers at 50 - 80F (10 - 27C) away from direct sunlight or heat. |
| Declarations | Vegan, Vegetarian, Natural, Non-GMO, |
| Allergens | None |
| Ingredient Declaration | Tapioca Maltodextrin, Gum Arabic, Natural Flavors |
| Label Declaration | All flavor ingredients in the product are approved for use in a regulation of the Food and Drug Administration or are generally recognized as safe from reliably published association lists |
| Pack-Off | Product packaged at 50 pound increments in a food grad polyethylene lined corrugate box. |

| Analytical/Microbiological Specifications: | | |
|---|----------------------|--------------------|
| Analysis | Specification | Method |
| Coliforms | <=100 cfu/g | AOAC 991.14 |
| Salmonella | Negative /25g | USP <2022> |
| Yeast & Mold | <=100 cfu/g | AOAC 997.02 |
| Loss on Drying | <8.0% | USP <731> |
| Particle Size Distribution | ≥99.0% thru 20 mesh | Internal Procedure |
| Organoleptic | Conforms to Standard | Internal Procedure |



ALLERGEN STATEMENT

| | |
|---------------|--|
| Product: | Natural Mixed Berry FL WONF SD Non-GMO |
| Product Code: | 410-465A |
| Issue Date: | 3/19/2024 |

| Allergen | Present | Same Line |
|--|----------------|------------------|
| Soy | No | No |
| Tree Nuts <i>almond, brazil nuts, nutmeg, cashews, coconut</i> | No | No |
| Egg <i>eggs, albumin</i> | No | No |
| Fish <i>fish, anchovy, bass, cod, salmon, etc.</i> | No | No |
| Wheat <i>flour, gluten flour, starches, bran</i> | No | No |
| Milk <i>milk, casein, lactose, whey, etc.</i> | No | No |
| Sesame Seeds <i>oil, seed</i> | No | No |
| Peanuts <i>peanut oil, peanut flour, mandelona nuts</i> | No | No |
| Crustaceans <i>shrimp, crab, crayfish, lobster, prawn</i> | No | No |
| Other Sensitivities | Present | Same Line |
| Lupin | No | No |
| Carmine | No | No |
| Refined Oils | No | No |
| Glutamate/Glutamic Acid | No | No |
| Mustard <i>oil, seed</i> | No | No |
| Sulfites >10ppm <i>sulfur dioxide, sodium dithionite</i> | No | No |
| Yellow #5 <i>tartazine</i> | No | No |
| Gluten <i>wheat, barley, oats, flour</i> | No | No |



NUTRITIONAL STATEMENT

| | |
|---------------|--|
| Product: | Natural Mixed Berry FL WONF SD Non-GMO |
| Product Code: | 410-465A |
| Issue Date: | 3/19/2024 |


| | Per 100 grams (by calculation) |
|-------------------------|--------------------------------|
| Calories, k/Cal | 333 |
| Calcium, mg/100g | 61.8 |
| Carbohydrates, g/100g | 87.9 |
| Cholesterol, mg/100g | 0.0 |
| Saturated Fat, g/100g | 0.0 |
| Total Fat, g/100g | 0.0 |
| Total Trans Fat, g/100g | 0.0 |
| Dietary Fiber, g/100g | 0.0 |
| Iron, mg/100g | 0.7 |
| Potassium, mg/100g | 26.9 |
| Protein, g/100g | 0.3 |
| Sodium, mg/100g | 134.5 |
| Sugars, g/100g | 3.4 |
| Added Sugars, g/100g | 3.4 |
| Vitamin D, mcg/100g | 0.0 |
| Ash, g/100g | 0.0 |



GMO STATEMENT

| | |
|---------------|--|
| Product: | Natural Mixed Berry FL WONF SD Non-GMO |
| Product Code: | 410-465A |
| Issue Date: | 3/19/2024 |

GMO Status

| | |
|---|---|
| <p>Non-GMO</p> <p>Does not contain components from GMO sources.</p> |  |
| <p>Non-GMO: Identity-Preserved</p> <p>Comprises of ingredients that were produced or derived from canola, corn, cotton, potato, and/or tomato; however these ingredients can be certified non-GMO. Compliant with European GM traceability standards EC 1829/2003 and 1830/2003.</p> | |
| <p>GMO Free (PCR Negative)</p> <p>Contains components that were produced or derived from canola, corn, cotton, potato, and/or tomato; however these components do not contain DNA/protein. This is validated by analytical testing or based on scientific principles.</p> | |
| <p>Contains or Derived from GMO sources</p> <p>Contains components that were produced or derived from a GMO source.</p> | |



DIETARY RESTRICTIONS

| | |
|---------------|--|
| Product: | Natural Mixed Berry FL WONF SD Non-GMO |
| Product Code: | 410-465A |
| Issue Date: | 3/19/2024 |

Sensapure, Inc. declares that the above mentioned product, to the best of our knowledge, does not contain animal-derived ingredients including dairy, honey, and egg products. This product is suitable for vegetarians and vegans. In that this product does not contain ingredients of animal origin, Sensapure also declares the product is hormone free.



L

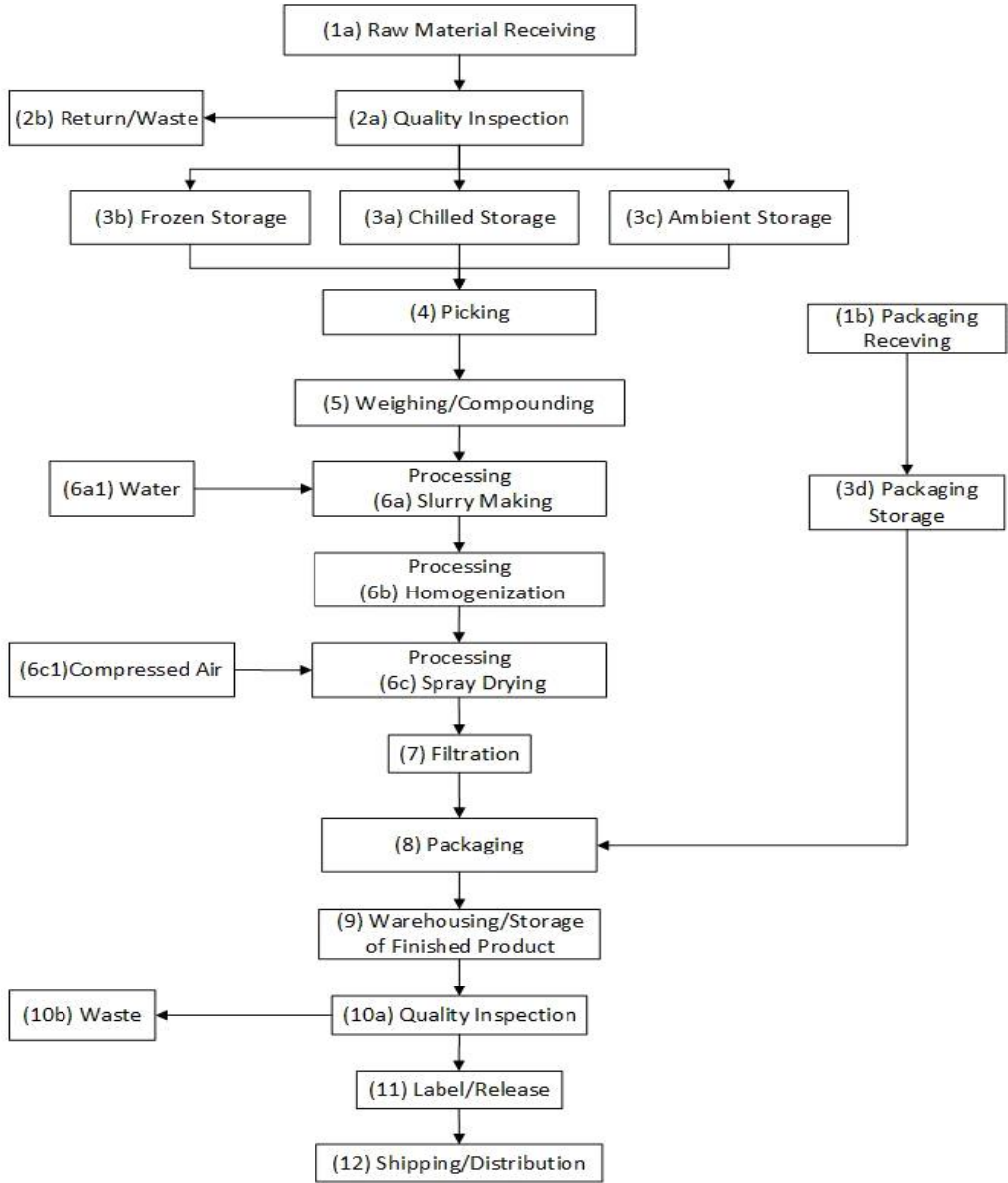
COUNTRY OF ORIGIN

| | |
|---------------|--|
| Product: | Natural Mixed Berry FL WONF SD Non-GMO |
| Product Code: | 410-465A |
| Issue Date: | 3/19/2024 |

Sensapure, Inc. certifies that the above mentioned product is manufactured in the United States of America (USA).

Spray Dry Flow Chart

Product: Natural Mixed Berry FL WONF SD Non-GMO
 Product Code: 410-465A
 Issue Date: 3/19/2024





GLUTEN STATEMENT

| | |
|---------------|--|
| Product: | Natural Mixed Berry FL WONF SD Non-GMO |
| Product Code: | 410-465A |
| Issue Date: | 3/19/2024 |

Sensapure, Inc. declares that the above mentioned product, to the best of our knowledge, does not contain gluten.



CERTIFICATE OF ANALYSIS

Customer:
Product Description: Natural Mixed Berry FL WONF SD Non-GMO
Product Code: 410-465A
Customer Item Code:

Lot Number:
Date of Manufacture:
Expiration Date:

| Assay | Specification | Result |
|---------------------------|-------------------------------|--------|
| Organoleptic | | |
| Appearance | White to Off White Powder | |
| Aroma | Characteristic of Mixed Berry | |
| Taste | Characteristic of Mixed Berry | |
| Analytical Testing | | |
| Particle Size | ≥99.0% thru 20 mesh | |
| Loss on Drying | <8.0% | |

DISCLOSURE: This document is an example Certificate of Analysis and does not represent a manufactured batch of material. Microbiological testing is performed on a rotational basis and is available upon request.

Approved By: _____

*Testing information included on actual certificates of Analysis may vary depending on internal testing frequencies and customer requirements.

Sensapure, Inc. | 1945 S. Fremont Drive, Salt Lake City, UT 84104 | 801-456-4284 | info@sensapure.com